

# Goed politiewerk & politiemodellen

The Best of xx Worlds

Dr.ir. Mariëlle den Hengst





# Intelligence & Onderzoek



# Inhoudsopgave

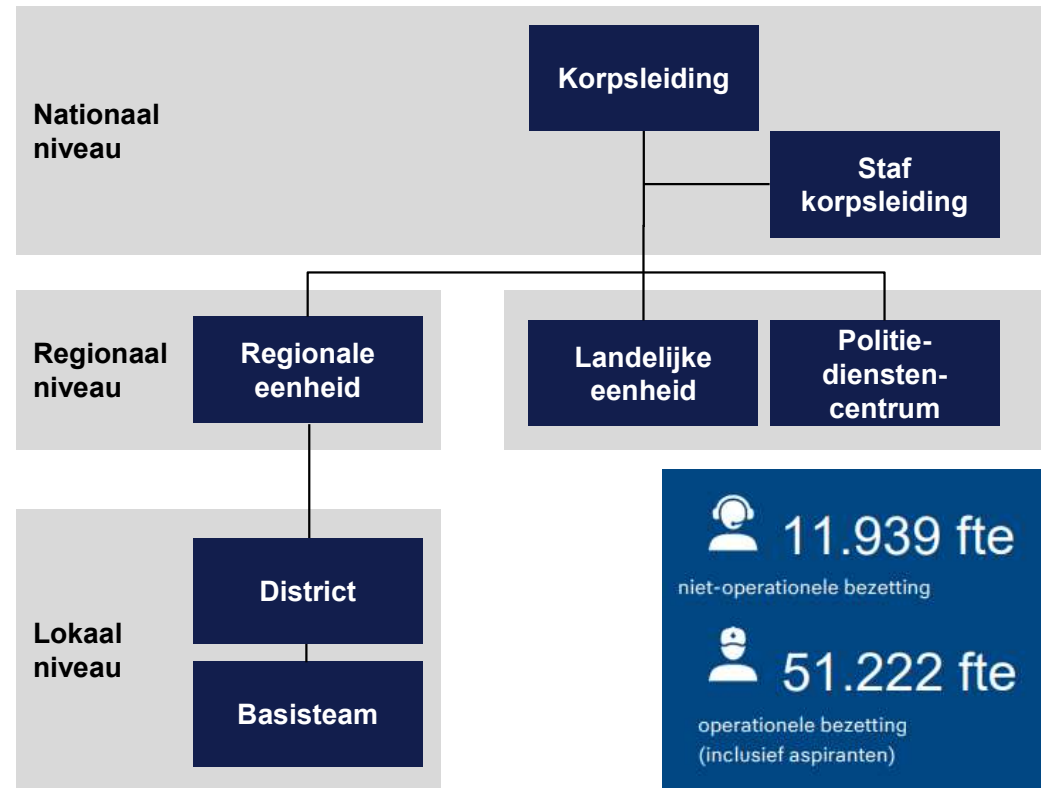
- Politie NL
- IGP ontwikkelingen
- Politiemodellen



# Politie NL



# Organisatie politie



\*cijfers over 2022



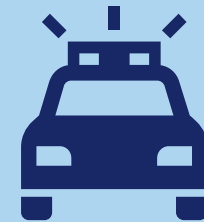
# Feiten en cijfers



**62.297 fte's**  
bij de politie in dienst



**3589**  
wijkagenten



**279.310**  
spoedmeldingen voor de politie



**+127%**  
stijging online misdrijven



**102.353**  
meldingen overlast personen  
verward gedrag



**795.907**  
misdrijven geregistreerd

\*cijfers over 2020



# Feiten en cijfers



**1672**

criminele samenwerkingsverbanden  
aangepakt



**323**

slachtoffers van mensenhandel



**186**

verdachten van mensenhandel ingezonden  
naar OM



**100%**

onvindbaar veroordeelden aangehouden



**96**

Inzetten op online kindermisbruik



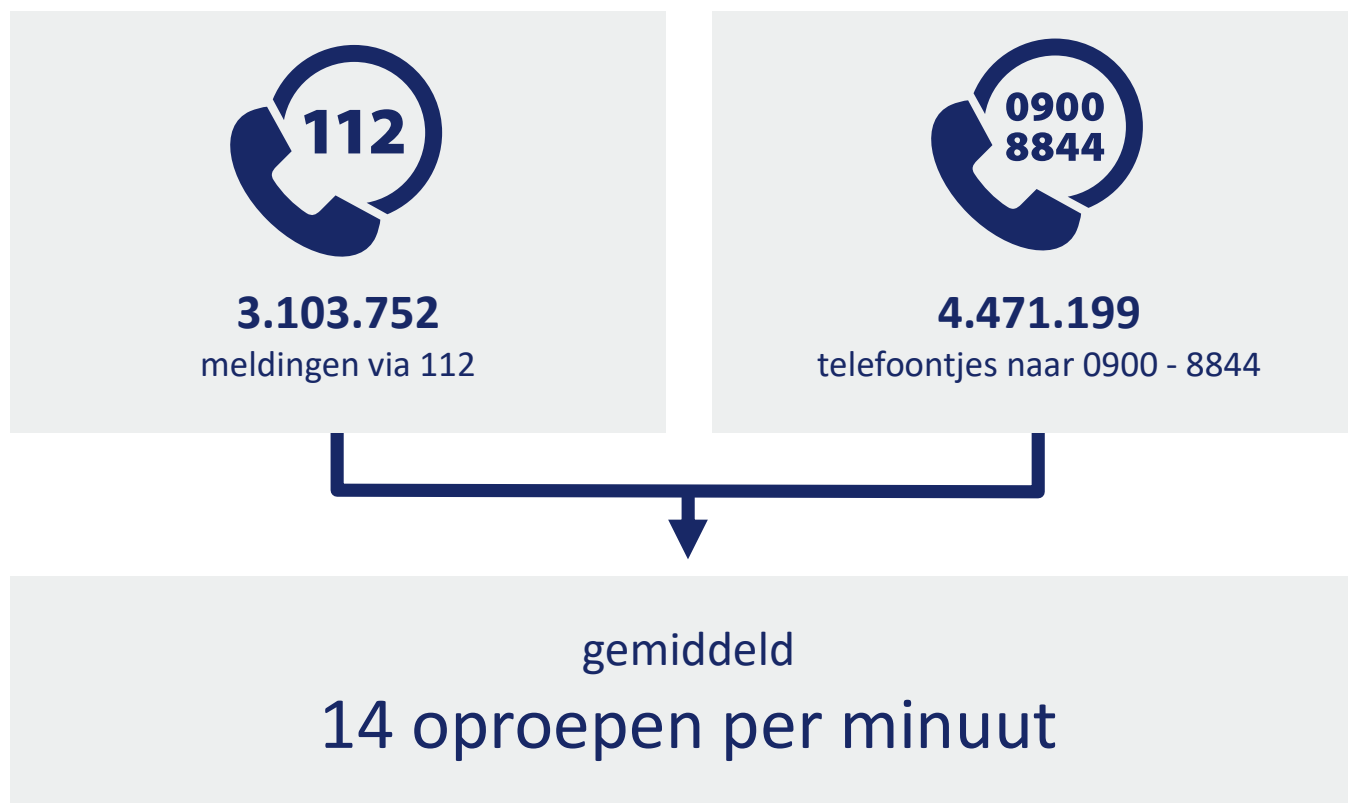
**49**

cybercrime fenomeenonderzoeken

\*cijfers over 2022

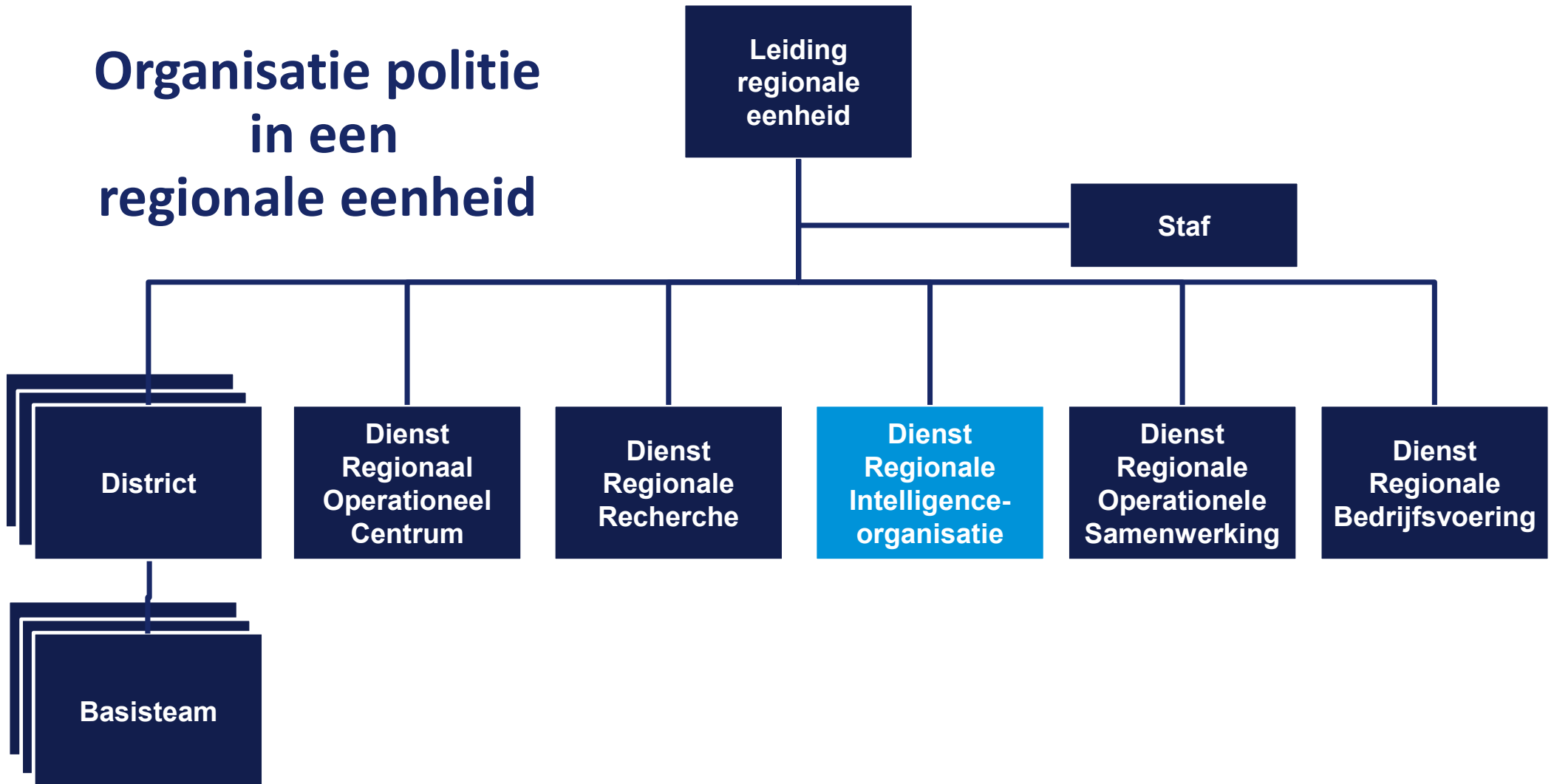


## 24/7 bereikbaar

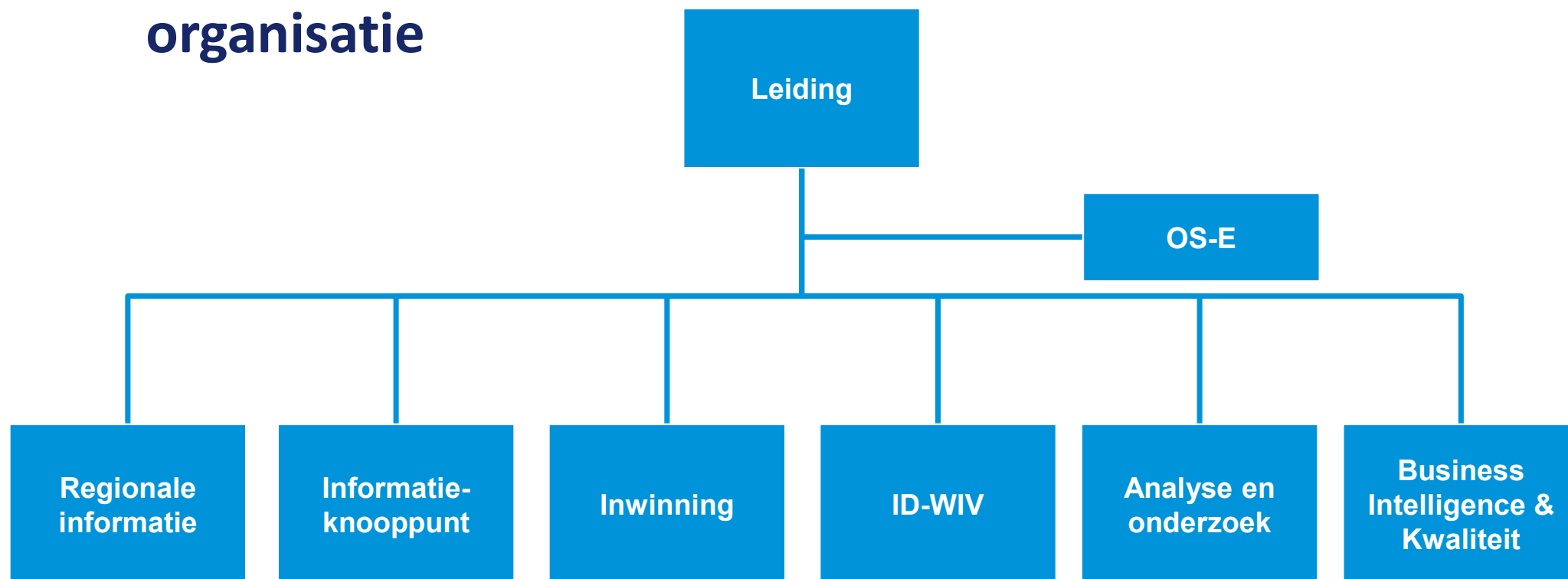




# Organisatie politie in een regionale eenheid



# Regionale intelligence-organisatie

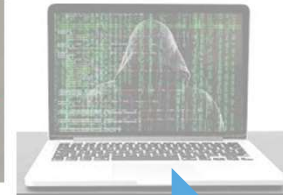


# IGP Ontwikkelingen





# IRT-affaire



1990

2000

2010

2020



IGO

IGP

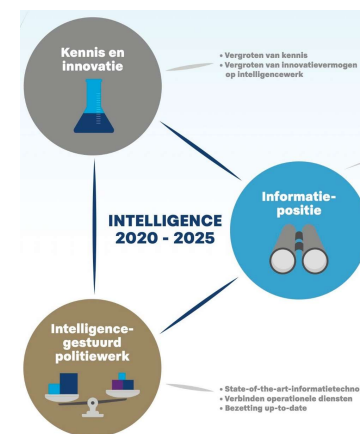
NIM

Nationale politie

Scan



	Staten	Voortbreiden	Uitbreiden	Producten
Lokaal	Lokale Waagring	DK	Beheer	Operatie
Regionaal	Regionale Waagring	DK	Beheer	Operatie
Nationaal	Nationale Waagring	DK	Beheer	Operatie



# Politiemodellen





**P R O A C T I V E**

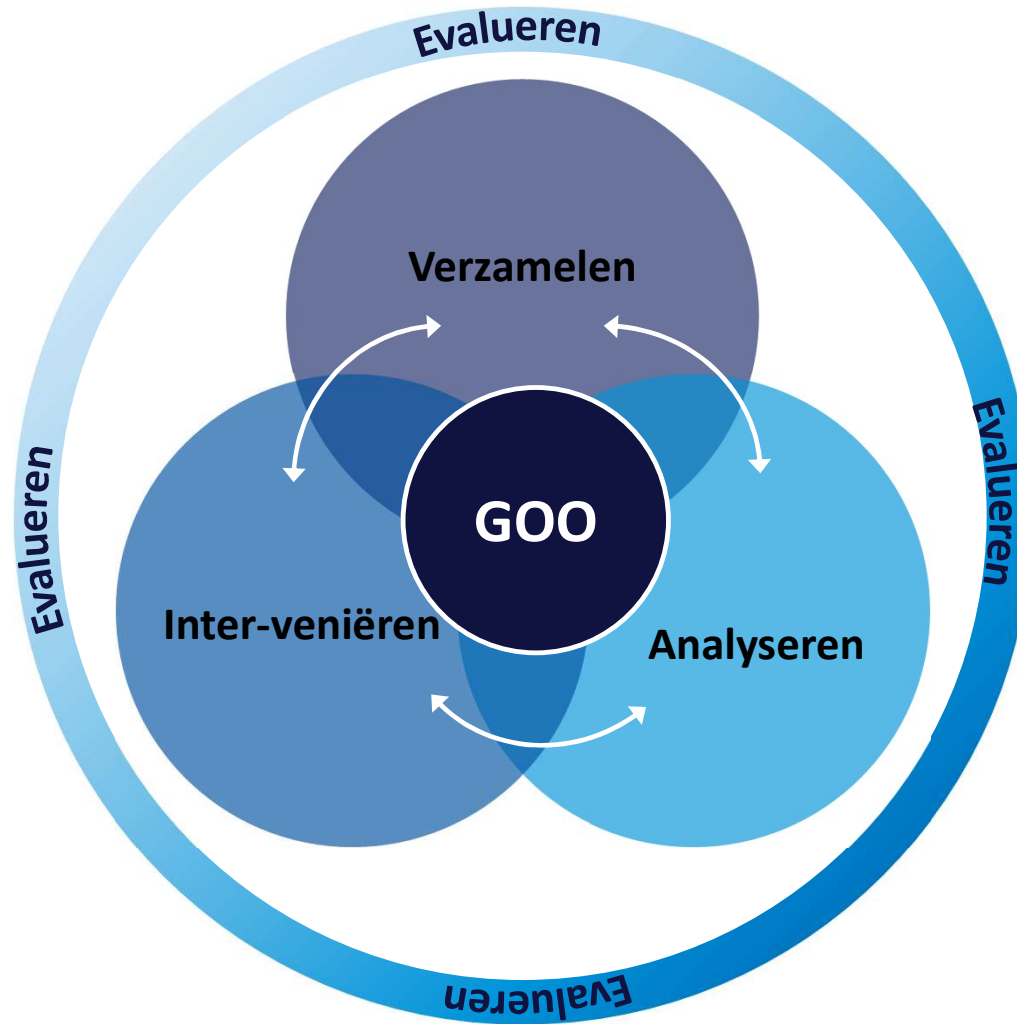
# Politiemodellen

- Community policing
- Problem-oriented policing
- Intelligence-led policing
- Evidence-based policing
- Data-driven policing
- Reassurance policing, signal crimes
- Hot spot policing
- Predictive & prescriptive policing
- Harm reduction
- Nodale oriëntatie
- Third party policing
- Zero tolerance, Broken window policy
- Precision policing
- Bigdata policing





# The Best of xx Worlds: Informed decision making



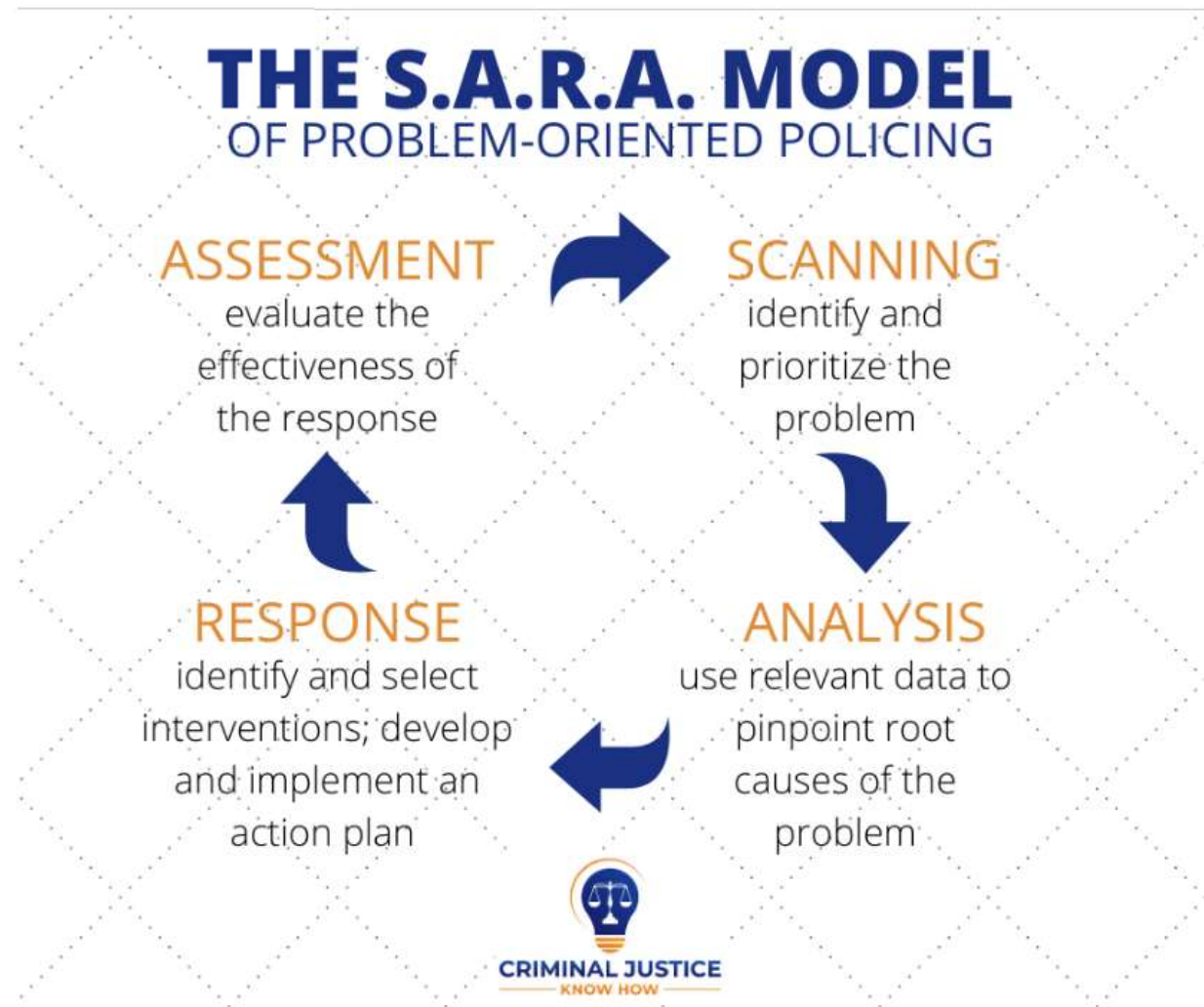
# Politiemodellen

- **Community policing**
- Problem-oriented policing
- Intelligence-led policing
- Evidence-based policing
- Data-driven policing
- Reassurance policing, signal crimes
- Hot spot policing
- Predictive & prescriptive policing
- Harm reduction
- Nodale oriëntatie
- Third party policing
- Zero tolerance, Broken window policy
- Precision policing
- Bigdata policing



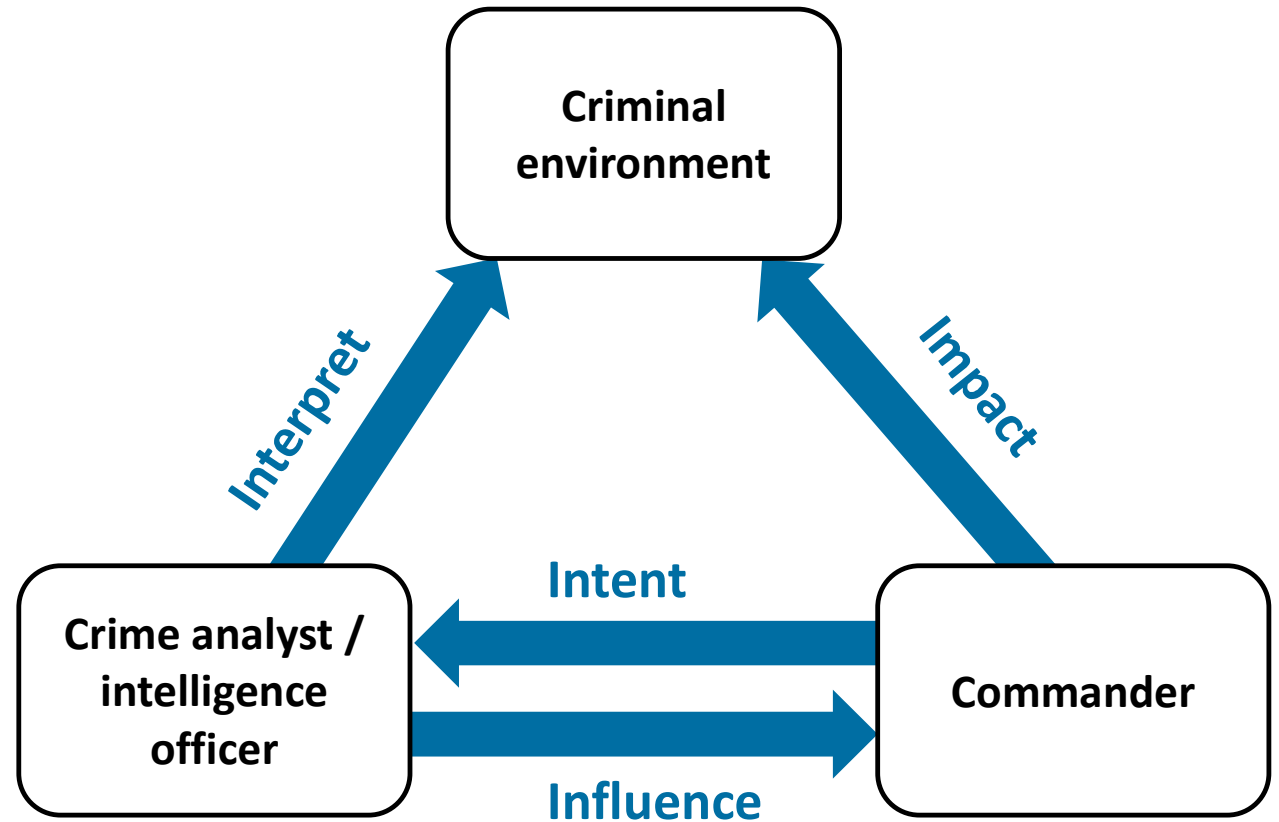
# Politiemodellen

- Community policing
- **Problem-oriented policing**
- Intelligence-led policing
- Evidence-based policing
- Data-driven policing
- Reassurance policing, signal crimes
- Hot spot policing
- Predictive & prescriptive policing
- Harm reduction
- Nodale oriëntatie
- Third party policing
- Zero tolerance, Broken window policy
- Precision policing
- Bigdata policing



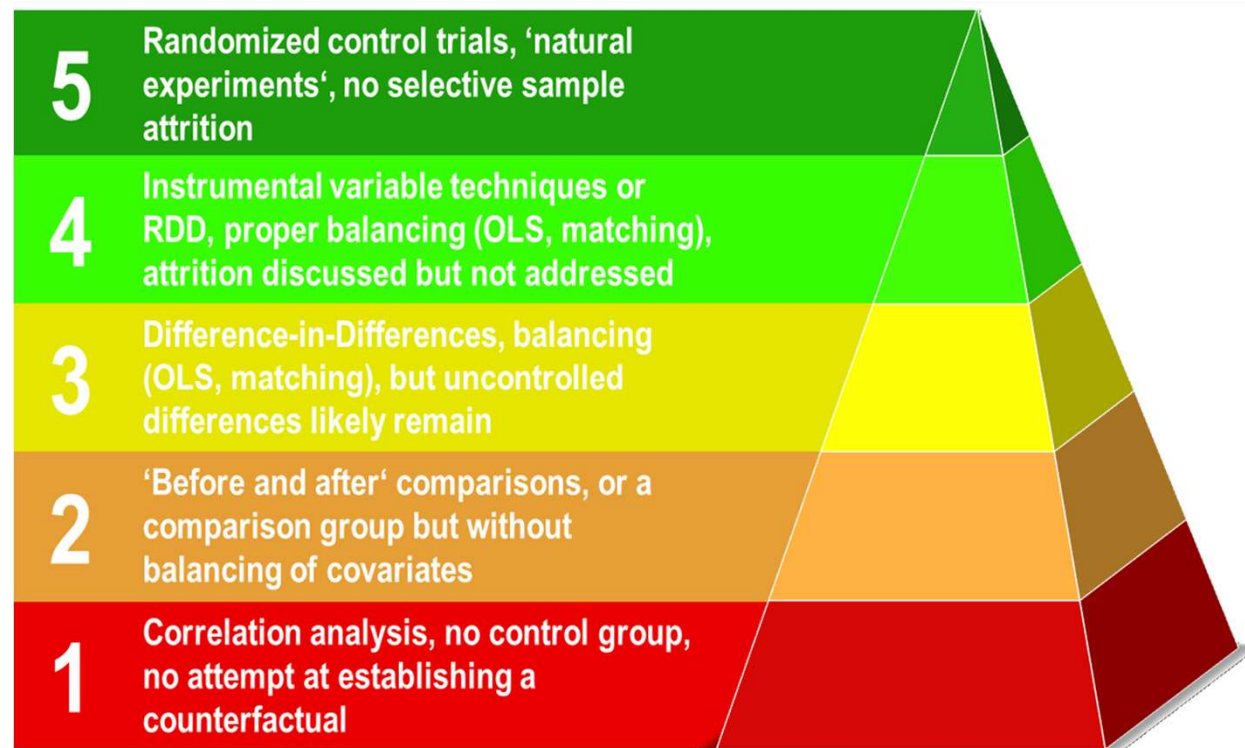
# Politiemodellen

- Community policing
- Problem-oriented policing
- **Intelligence-led policing**
- Evidence-based policing
- Data-driven policing
- Reassurance policing, signal crimes
- Hot spot policing
- Predictive & prescriptive policing
- Harm reduction
- Nodale oriëntatie
- Third party policing
- Zero tolerance, Broken window policy
- Precision policing
- Bigdata policing



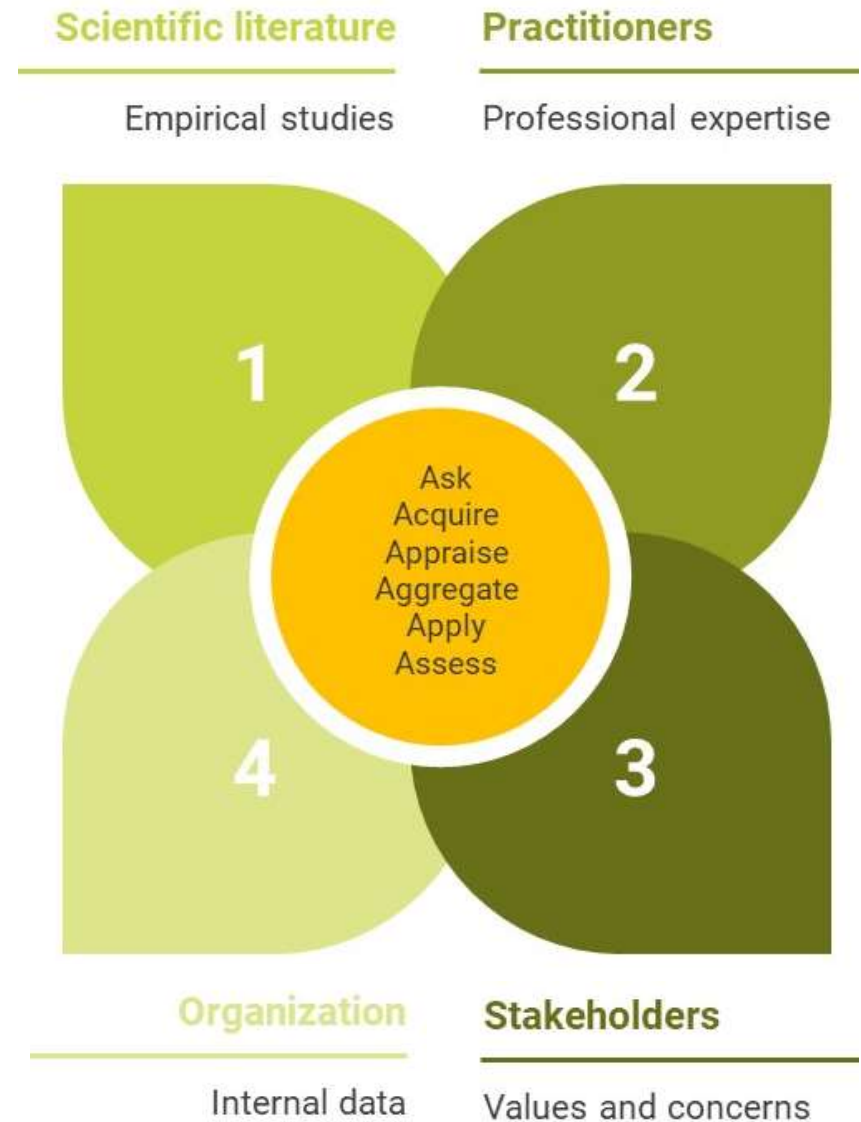
# Politiemodellen

- Community policing
- Problem-oriented policing
- Intelligence-led policing
- **Evidence-based policing**
- Data-driven policing
- Reassurance policing, signal crimes
- Hot spot policing
- Predictive & prescriptive policing
- Harm reduction
- Nodale oriëntatie
- Third party policing
- Zero tolerance, Broken window policy
- Precision policing
- Bigdata policing



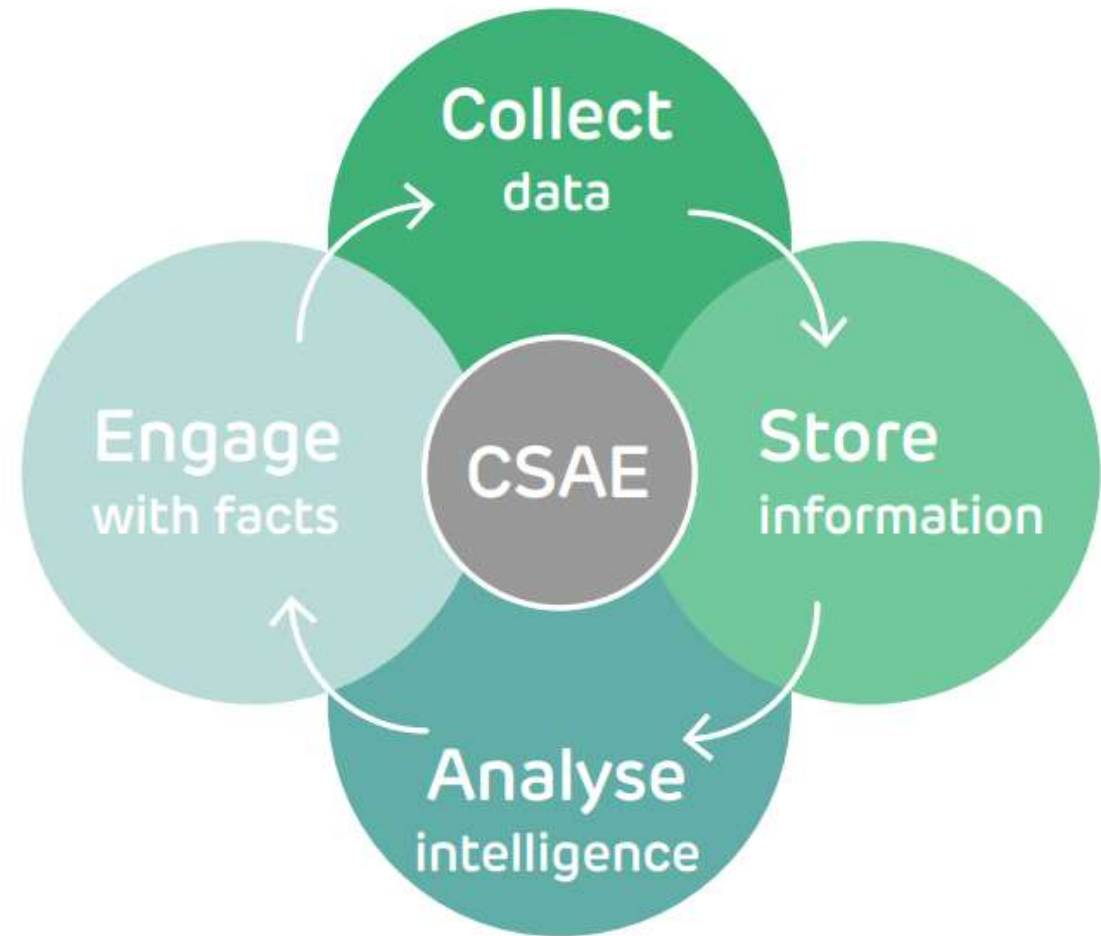
# Politiemodellen

- Community policing
- Problem-oriented policing
- Intelligence-led policing
- **Evidence-based policing**
- Data-driven policing
- Reassurance policing, signal crimes
- Hot spot policing
- Predictive & prescriptive policing
- Harm reduction
- Nodale oriëntatie
- Third party policing
- Zero tolerance, Broken window policy
- Precision policing
- Bigdata policing



# Politiemodellen

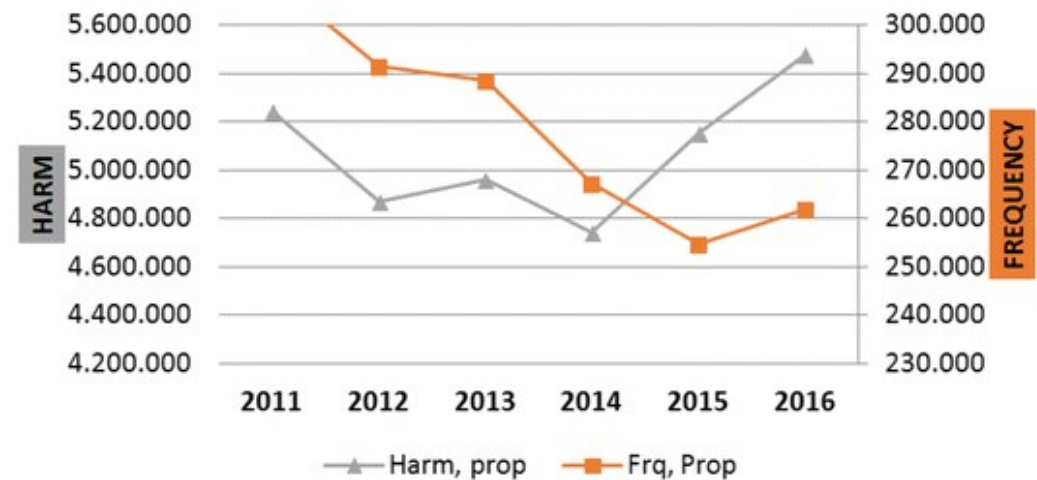
- Community policing
- Problem-oriented policing
- Intelligence-led policing
- Evidence-based policing
- **Data-driven policing**
- Reassurance policing, signal crimes
- Hot spot policing
- Predictive & prescriptive policing
- Harm reduction
- Nodale oriëntatie
- Third party policing
- Zero tolerance, Broken window policy
- Precision policing
- Bigdata policing



# Politiemodellen

- Gebiedsgebonden (community policing, reassurance policing, contextgedreven, signal crimes)
- Harm reduction
- Probleemgericht (problem-oriented policing)
- Third party policing
- Zero tolerance, Broken window policy
- Nodale oriëntatie
- Hot spot policing
- Intelligencegestuurd
- Predictive, prescriptive policing
- Precision policing
- Evidence-based policing
- Bigdata policing
- Datagedreven politiewerk

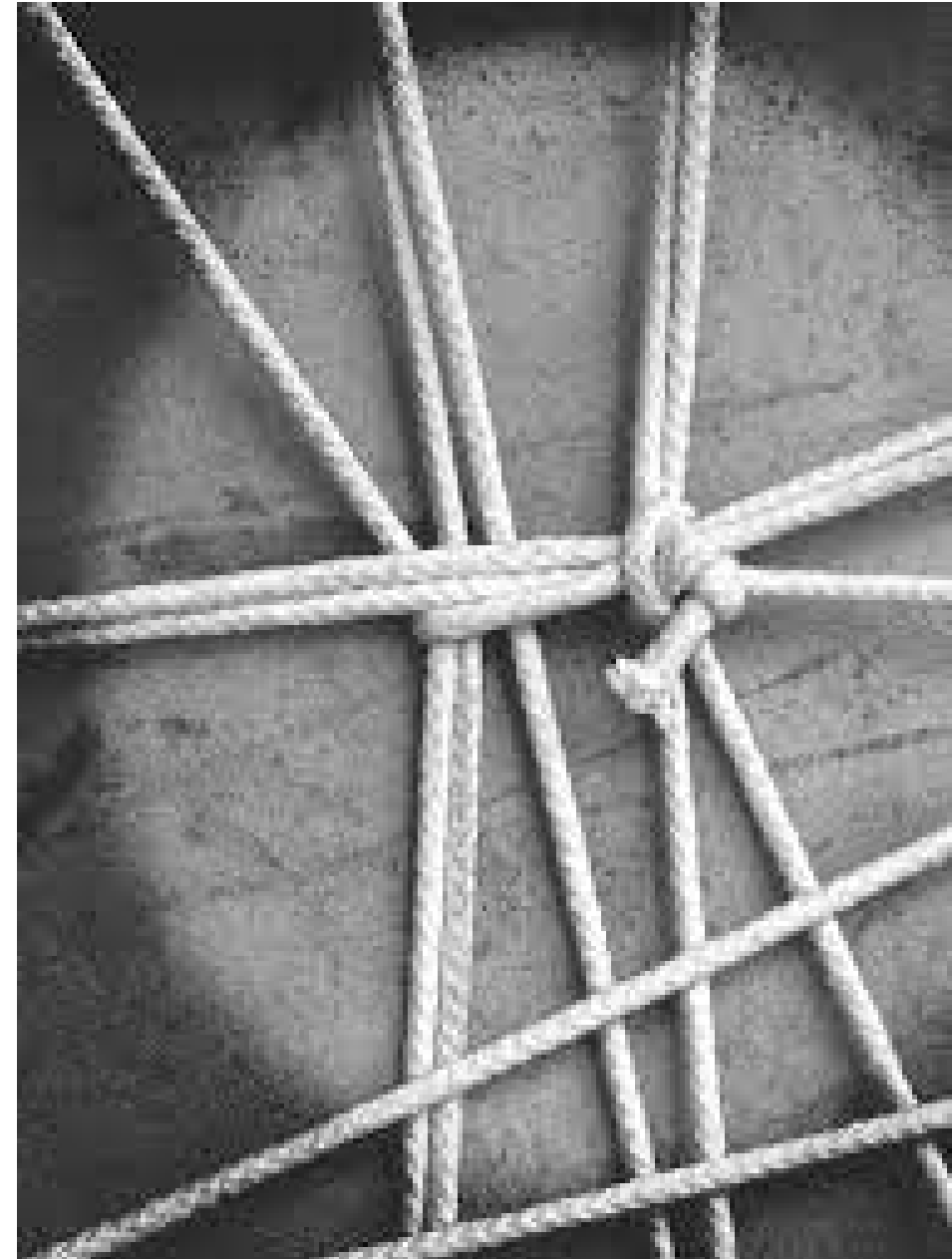
Property crime  
Harm versus frequency, 2011- 2016





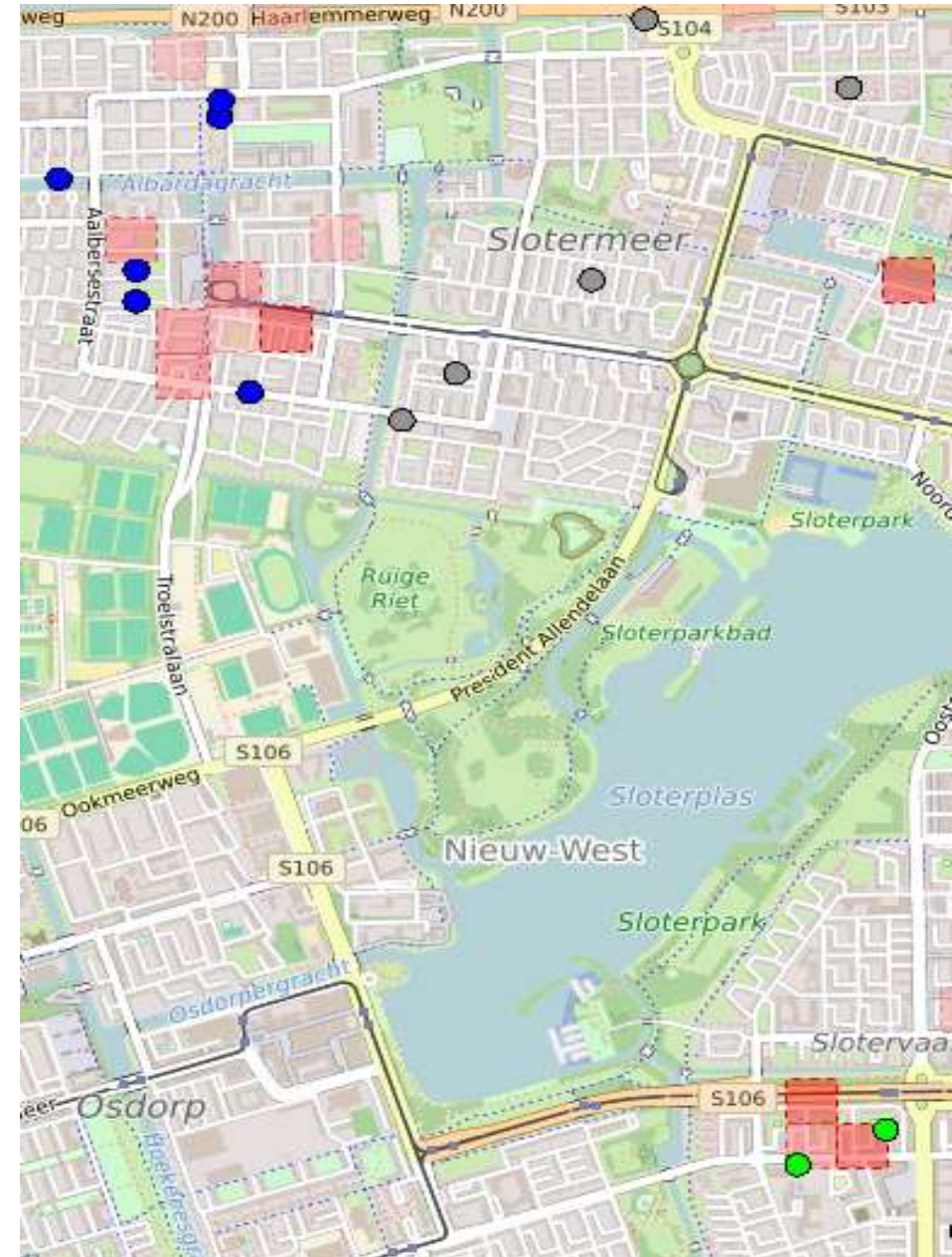
# Politiemodellen

- Gebiedsgebonden (community policing, reassurance policing, contextgedreven, signal crimes)
- Harm reduction
- Nodale oriëntatie
- Hot spot policing, predictive policing
- Probleemgericht (problem-oriented policing)
- Third party policing
- Zero tolerance, Broken window policy
- Intelligencegestuurd
- Prescriptive policing
- Precision policing
- Evidence-based policing
- Bigdata policing
- Datagedreven politiewerk



# Politiemodellen

- Gebiedsgebonden (community policing, reassurance policing, contextgedreven, signal crimes)
- Harm reduction
- Nodale oriëntatie
- Hot spot policing, predictive policing
- Probleemgericht (problem-oriented policing)
- Third party policing
- Zero tolerance, Broken window policy
- Intelligencegestuurd
- Prescriptive policing
- Precision policing
- Evidence-based policing
- Bigdata policing
- Datagedreven politiewerk



# The Best of xx Worlds: Informed decision making

