



Coordination with American Law Enforcement

HONOR | SERVICE | INTEGRITY

POINTS OF DISCUSSION

- American Law Enforcement Model
- US Law Enforcement Working Group
- HSI Overview
- Capabilities and Limitations in Support of Belgium

UNITED STATES LAW ENFORCEMENT



The primary difference between the US and Belgian Criminal Justice Systems is Judicial Application: *Adversarial* verses *Inquisitorial* Systems.

UNITED STATES LAW ENFORCEMENT



The *Inquisitorial System* is associated with civil law systems, and it has existed for many centuries. It is characterized by extensive pre-trial investigation and interrogations with the objective to avoid bringing an innocent person to trial. The inquisitorial process can be described as an official inquiry to ascertain the truth.

The *Adversarial System* uses a competitive process between prosecution and defense to determine the facts.

UNITED STATES LAW ENFORCEMENT



The *Inquisitorial Process* grants more power to the judge who oversees the process, whereas the judge in the *Adversarial System* serves more as an arbiter between claims of the prosecution and defense .

The authority of the prosecutor is even more diminished within the *Adversarial System* at the state and local levels.

UNITED STATES LAW ENFORCEMENT

- Like Belgium, US law enforcement operates at the local and federal level with distinct although sometimes overlapping competencies.
- All officers may be cross designated, so that they can enforce both federal and local/state laws (i.e., Task Force Officers)
- Total Sworn Law Enforcement in the United States = **696,644**
- Total Police Agencies in the United States = **17,985**



UNITED STATES LAW ENFORCEMENT

Despite the magnitude of law enforcement agencies across the United States, only five agencies are directly represented at the United States Embassy in Brussels.



United States Embassy - Law Enforcement Working Group



HONOR | SERVICE | INTEGRITY

Who We Are

HSI is the principal investigative arm of the U.S. Department of Homeland Security, responsible for investigating transnational crime and threats, specifically those criminal organizations that exploit the global infrastructure through which international trade, travel, and finance move.

WHO WE ARE

HSI is the principal investigative arm of the U.S. Department of Homeland Security, responsible for investigating transnational crime and threats, specifically those criminal organizations that exploit the global infrastructure through which international trade, travel, and finance move.

OUR MISSION

HSI investigates, disrupts, and dismantles terrorist, transnational, and other criminal organizations that threaten or seek to exploit the customs and immigration laws of the U.S.

OUR WORKFORCE

HSI's workforce consists over 10,000 employees, including special agents, criminal analysts, mission support personnel, and contract staff assigned to offices throughout the United States and around the world.

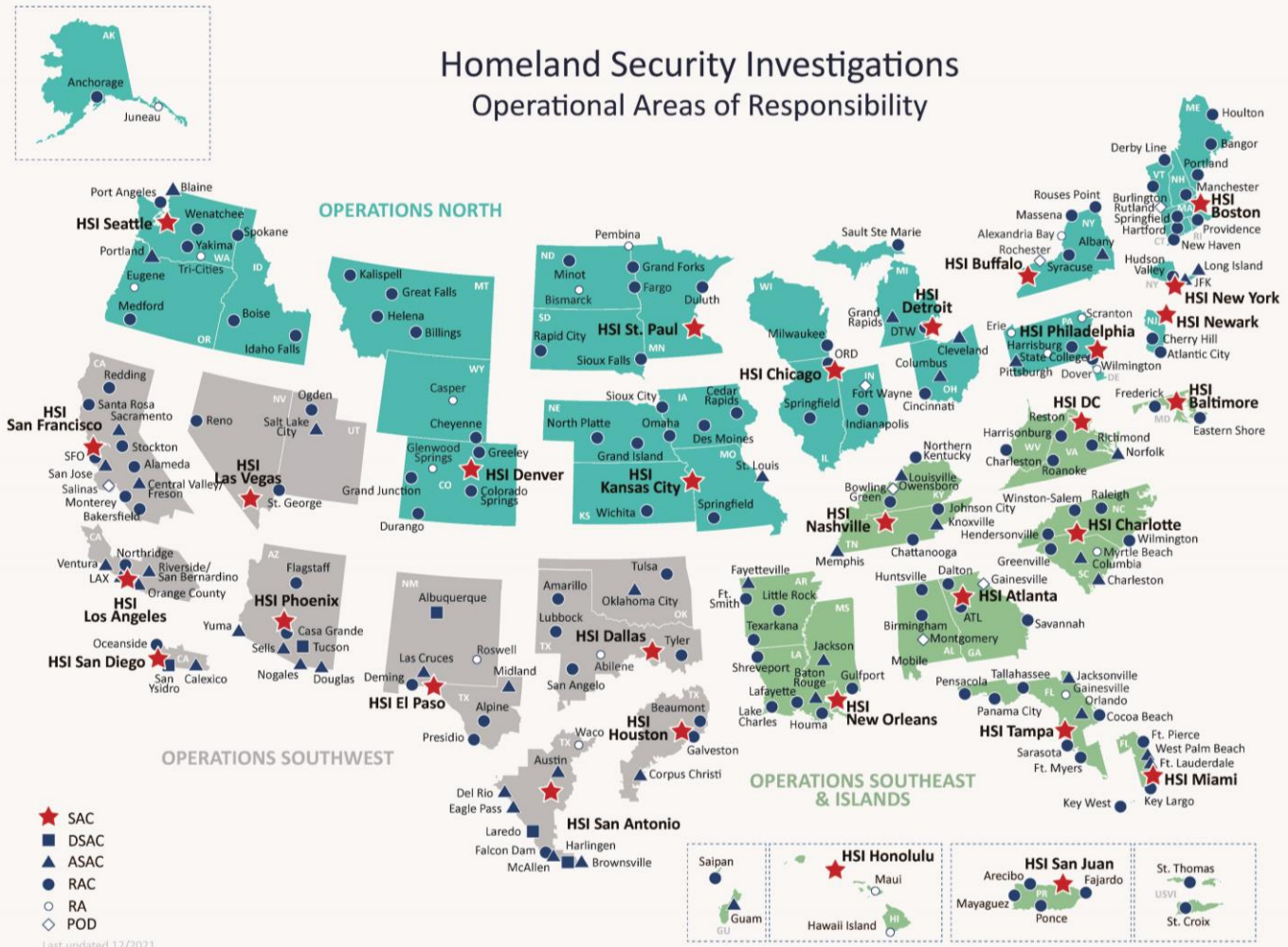
Most of HSI's 6,800+ special agents are assigned to one of HSI's Special Agent in Charge (SAC) offices or suboffices located in over 220 cities across the nation. HSI's domestic footprint is supplemented by almost 3,700 task force officers (TFOs) representing key federal, state, and local partners in the fight against transnational criminal organizations.

HSI's international force is DHS's largest investigative presence abroad, anchored by over 200 special agents assigned to U.S. embassies, consulates, and combatant commands around the globe. With 86 international offices in 54 countries, HSI has one of the largest international footprints in U.S. law enforcement.



HONOR | SERVICE | INTEGRITY

HOMELAND SECURITY INVESTIGATIONS DOMESTIC OFFICES



30
SPECIAL AGENT IN CHARGE
(SAC) OFFICES ACROSS THE U.S.

253
DOMESTIC FIELD OFFICES

HOMELAND SECURITY INVESTIGATIONS INTERNATIONAL OFFICES



Homeland Security Investigations
International Operational Areas of Responsibility

- ◆ Assistant Attaché (GS-14)
- ★ Attaché (GS-15)
- △ ERO Only
- ▲ Locally Employed Staff
- DOD Liaisons



80+
OFFICES LOCATED IN 54
COUNTRIES AROUND THE
WORLD

458
PERSONNEL ASSIGNED
OVERSEAS

HONOR | SERVICE | INTEGRITY

HSI BRUSSELS

AOR:

- Belgium
- Luxembourg
- European Union
- NATO
- World Customs Organization

STAFF:

- 4 Special Agents
- 1 Local Investigator
- 1 Administrative



HOMELAND SECURITY INVESTIGATIONS

FBI



NARCOTICS SMUGGLING
MONEY LAUNDERING
CHILD EXPLOITATION
TRANSNATIONAL GANGS
LABOR EXPLOITATION
HUMAN SMUGGLING
HUMAN TRAFFICKING
WEAPONS TRAFFICKING
CYBERCRIME
IDENTITY & BENEFIT FRAUD
FINANCIAL FRAUD & SCAMS

ILLEGAL TECHNOLOGY
PROCUREMENT & SANCTIONS
VIOLATIONS
TERRORISM & NATIONAL
SECURITY THREATS
HUMAN RIGHTS VIOLATIONS &
WAR CRIMES
CULTURAL PROPERTY, ART, &
ANTIQUITIES SMUGGLING
INTELLECTUAL PROPERTY
THEFT & TRADE FRAUD

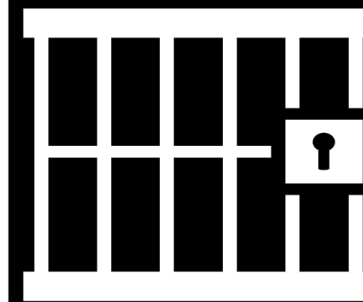
HOMELAND SECURITY INVESTIGATIONS FISCAL YEAR 2021 AT A GLANCE



14,530 lbs.
FENTANYL SEIZED



234,623 lbs.
METHAMPHETAMINE
SEIZED



34,974
HSI CRIMINAL
ARRESTS

3,574
TRANSNATIONAL GANGS
CRIMINAL ARRESTS

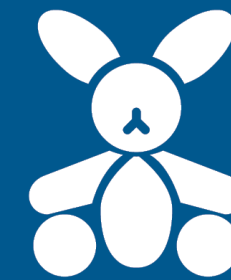


INCLUDES

340

MS-13 CRIMINAL ARRESTS

2,360
HUMAN TRAFFICKING
CRIMINAL ARRESTS



3,776
CHILD EXPLOITATION
CRIMINAL ARRESTS

\$973+ MILLION
CURRENCY AND
ASSETS SEIZED



1,177

CHILD EXPLOITATION VICTIMS
RESCUED OR IDENTIFIED

HONOR | SERVICE | INTEGRITY

HOMELAND SECURITY INVESTIGATIONS OUR MANDATE



COMBATting
FINANCIAL CRIME

INVESTIGATING
CYBERCRIME

PREVENTING CRIMES
OF EXPLOITATION

ENSURING PUBLIC
SAFETY

UPHOLDING FAIRNESS
IN GLOBAL TRADE

PROTECTING
NATIONAL SECURITY

SECURING THE
BORDER

HONOR | SERVICE | INTEGRITY

HOMELAND SECURITY INVESTIGATIONS DIVISIONS

DOMESTIC OPERATIONS

INTERNATIONAL OPERATIONS

COUNTERING TRANSNATIONAL ORGANIZED CRIME

NATIONAL SECURITY

GLOBAL TRADE

CYBER & OPERATIONAL TECHNOLOGY

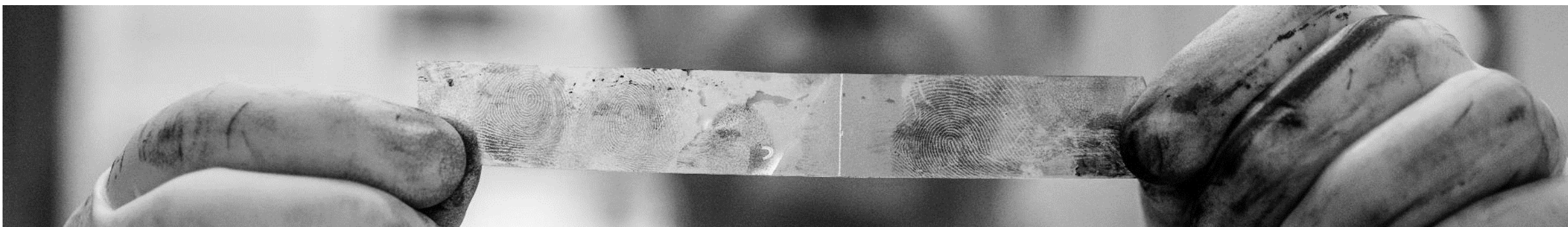
OFFICE OF INTELLIGENCE

OFFICE OF ADMINISTRATIVE OPERATIONS

CENTER FOR COUNTERING HUMAN TRAFFICKING

HONOR | SERVICE | INTEGRITY

HOMELAND SECURITY INVESTIGATIONS CENTERS | LABS | TASK FORCES | PROGRAMS



CENTERS

NATIONAL INTELLECTUAL PROPERTY RIGHTS COORDINATION CENTER

EXPORT ENFORCEMENT COORDINATION CENTER

CENTER FOR COUNTERING HUMAN TRAFFICKING

CYBER CRIMES CENTER

BULK CASH SMUGGLING CENTER

HUMAN RIGHTS VIOLATORS AND WAR CRIMES CENTER

PROG LABS

TF

BORDER ENFORCEMENT SECURITY TASK FORCE

JOINT TERRORISM TASK FORCE

DOCUMENT AND BENEFIT FRAUD TASK FORCE

INNOVATION LAB

FORENSIC LABORATORY

HSI ACADEMY AT FEDERAL LAW ENFORCEMENT TRAINING CENTER

VICTIM ASSISTANCE PROGRAM

HONOR | SERVICE | INTEGRITY

International Support Authorities

Agreement between the United States of America and the European Community Regarding Mutual Assistance between Their Customs Services (1995)

Agreement between the United States of America and the Government of Belgium Regarding Mutual Assistance between Their Customs Services (1991)

Mutual Legal Assistance Treaty in Criminal Matters between the United States of America and the Kingdom of Belgium (1988)

International Support Restrictions

Third – Agency Rule

Bank Secrecy Act

Classified Information

International Support Capabilities



- **Travel Data**
- **Trade Data**
- **Financial Data**
- **Electronic Presence**
- **US Criminal Histories**
- **Identifier Deconfliction**
- **Analytical Support**
- **Administrative Subpoena Authority**

Travel Data



- **Date of Entry/Exit/Transit**
- **Flight Data**
- **Co-Travelers**
- **Visa Details**
- **ESTA Details**
- **Customs Declarations**
- **US Points of Contact**
- **Enforcement Actions**

Analytical Support



- **Open-Source Analysis**
- **DHS vetting**
- **Target Consolidation (aka Baseball Cards)**
- **Network Analysis**
- **Charting**
- **Multiphasic Support**

Administrative Subpoena Authority



1. **Immigration Subpoena**
2. **Customs Subpoena**
3. **Controlled Substance Subpoena**

HOMELAND SECURITY INVESTIGATIONS

Case study Administrative Subpoena



- HSI Brussels was contacted by the Belgian Federal Police regarding a person suspected of being involved in child exploitation.
- After investigation it appeared that the suspect was living in the US and was an immediate threat towards his own daughter.
- Based on this, HSI and Chesapeake Police Department were able to apprehend the suspect.
- Suspect arrested and to face trial.

HONOR | SERVICE | INTEGRITY

Project X-STREAM

Due to its geographic location and robust transportation systems, the Kingdom of Belgium is a major hub for the export and transshipment of synthetic drugs to the United States.

In order to address this phenomenon, HSI/Brussels works in conjunction with Belgian authorities to identify and target transnational criminal networks' illicit production, supply chains, distribution networks, and financial proceeds.

**International Effort to Target
International Threats**

PROJECT



X-STREAM

Project X-STREAM

Initiated in 2018, *Project X-Stream* provides law enforcement the ability to further the investigative process through the expedited transfer of evidence to the United States for further enforcement action.

All transfers are authorized by a Belgian prosecutor subsequent to a Customs Mutual Assistance Agreement (CMAA) request submission by HSI/Brussels.

International Effort to Target
International Threats

PROJECT



X-STREAM

Project X-STREAM

Since the inception of the project in 2018, over 700 parcels have been interdicted to the United States and over 200 parcels transferred for further investigative activities.

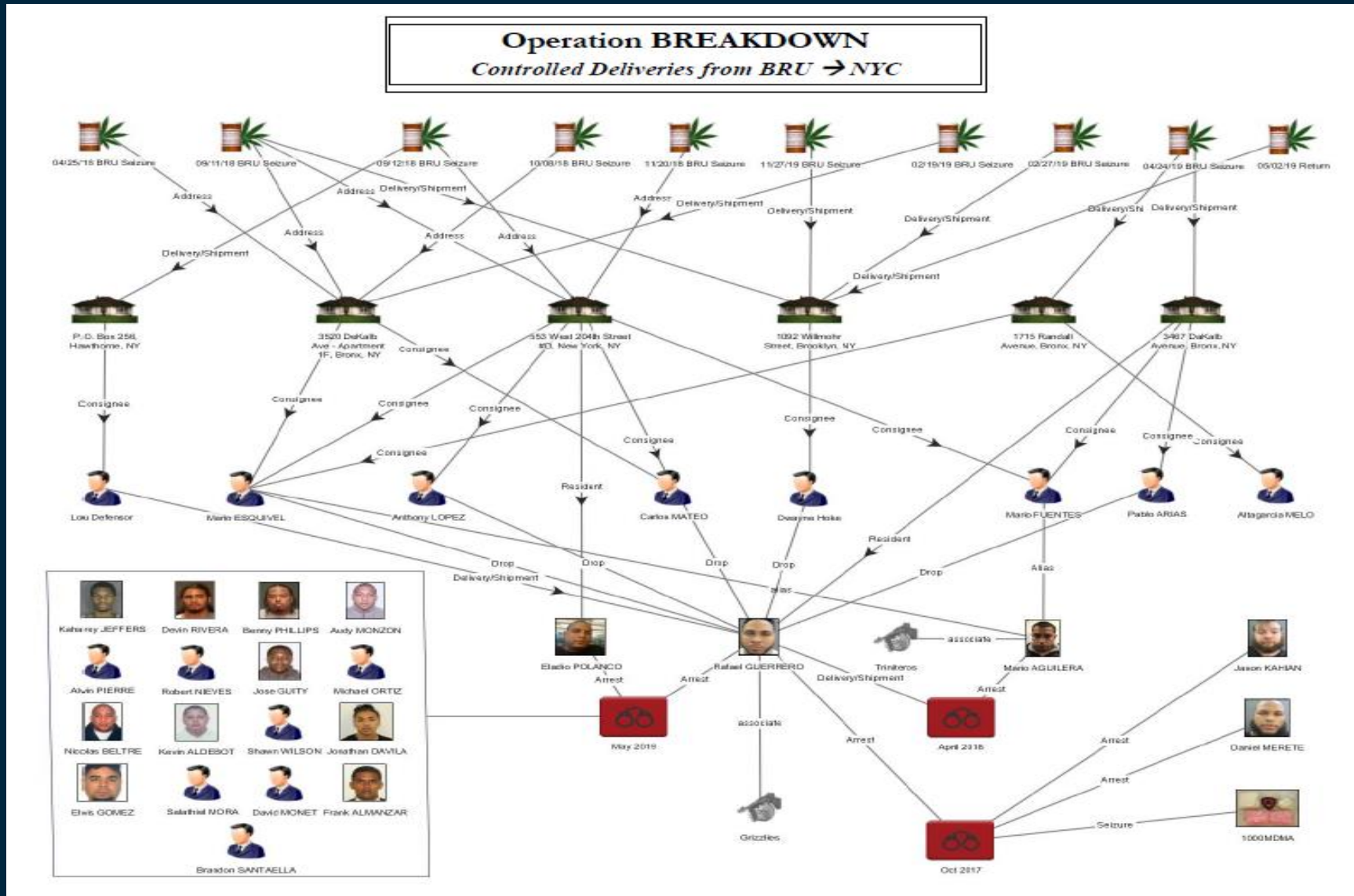
Subsequent arrests for distribution have included gang members, corrupt law enforcement, active military personnel, schoolteachers, and a domestic terrorist.

PROJECT



X-STREAM

HOMELAND SECURITY INVESTIGATIONS



HONOR | SERVICE | INTEGRITY

HOMELAND SECURITY INVESTIGATIONS

QUESTIONS

HONOR | SERVICE | INTEGRITY

HOMELAND SECURITY INVESTIGATIONS

H S I

Christopher Chancy
Special Agent / Country Attaché
Christopher.M.Chancy@ice.dhs.gov



Kenneth Labrie
Special Agent
Kenneth.G.Labrie@ice.dhs.gov

Cedric Clocheret
Investigator
Clocheretc@state.gov

SECURING THE HOMELAND FROM TRANSNATIONAL
THREATS AND CRIMINAL ORGANIZATIONS