

Leveraging Open Source Intelligence For Law Enforcement

John Reid
CEO & Founder

@rejoco
+447872009735
john.reid@repknight.com

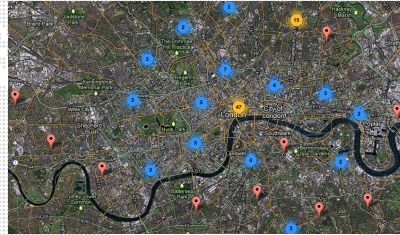


Large Scale Events

- Massive volumes of data being created over very short time periods.
- Data created by users from all over the globe.
- Vast number of topics and subjects discussed on social media – Not all relevant
- Members of the public were able to flag issues of concern, such as over crowding
- Wide variety of data sources.

Protests

- Due to large numbers in attendance organisation of events conducted via social media.
- Users openly discuss plans, both in the lead up to, and during the event.
- Ability to misdirect police by falsely setting a destination.
- Influential individuals or organisers are identifiable through social media.











'Thatcher', in London on 13 April 2013

Cyber Security: Anonymous

- A strong desire and ability to remain undetected.
- Publicise their activity through social media.
- Openly lay claim to their activity.
- Underlying trends ultimately identifiable.
- Splinter groups.
- Target identification discussed on line.
- Broad spectrum of social media used.



Tracing the Individual

Message Details	 NMSyria NMSyria	RT @AshResistance: Personally, even though I'm not #Syrian. I think Hafez al Assad was better than Margaret Thatcher. <small>posted 13/04/2013 at 18:24:32</small>
 Twitter Message		
 Media & URLs	Tweeting the revolution in Syria. If Freedom is a plant that grows on red and fragrant blood - The poet Ahmad Matar. RT = Endorsement	
 Location		
User Details	32683 Tweets	
	7128 Followers	
	Following 872	
 Tweet History	Joined Twitter on 29/10/2010 at 12:57:46	
 Followers		
 Following		

There is no conversation for this message.

Alerting:

- multi lingual
- Discussions held on a variety of forums.
- Information and methodology posted online.
- Information originates on a global scale.



Reputational Awareness

- Social media provides a two way channel for engagement between organisations and the community.
- Enables management to assess organisational and personal impact on public perception.
- Sentiment analysis of online discussions.

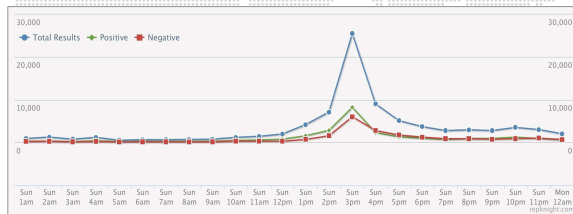
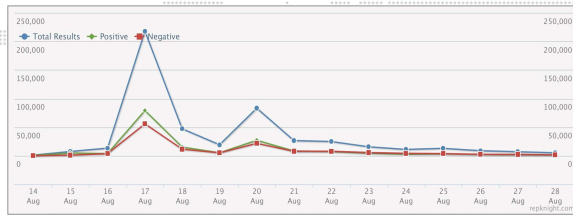
The rules of engagement

A review of the August 2011 disorders

© HMIC 2011
ISBN: 978-1-84987-654-9
www.hmic.gov.uk

Case Study: Assange

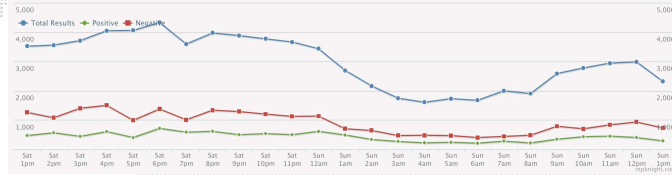
- Fled to embassy.
- Speech made on Sunday 19th August 2012.



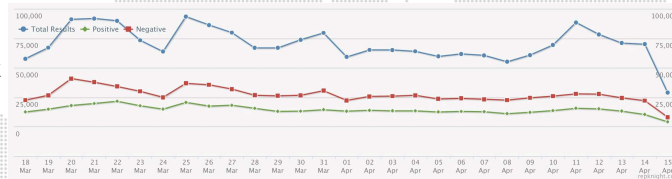


Case Study: Syria

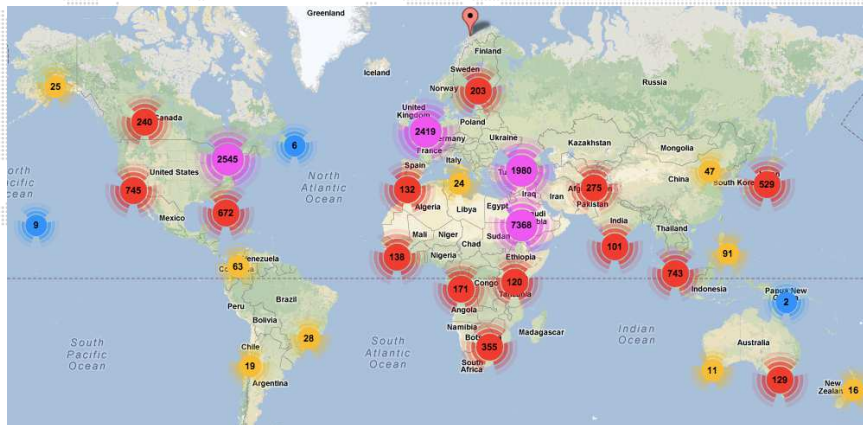
- 24hrs, in real time



- Over 550K per week

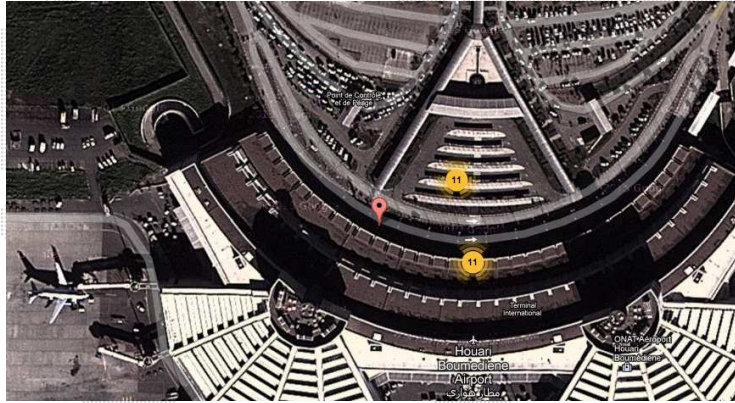


Case Study: Syria





Case Study: Algiers Airport



Emerging topic identification

- Algorithms track frequencies of terms and phrases
- Flag emerging terms and phrases
- Enable the user to drill into messages
- Sub 2 minute identification of unknowns, eg attacks, incidents