

# Community Policing in the United Kingdom

Chief Superintendent  
Stephen Bloomfield  
Metropolitan Police

## Introduction

- The UK context
- The re-invention of Community Policing
- Community Policing in the UK
- Existing and future challenges

## Background – Structure of UK Policing

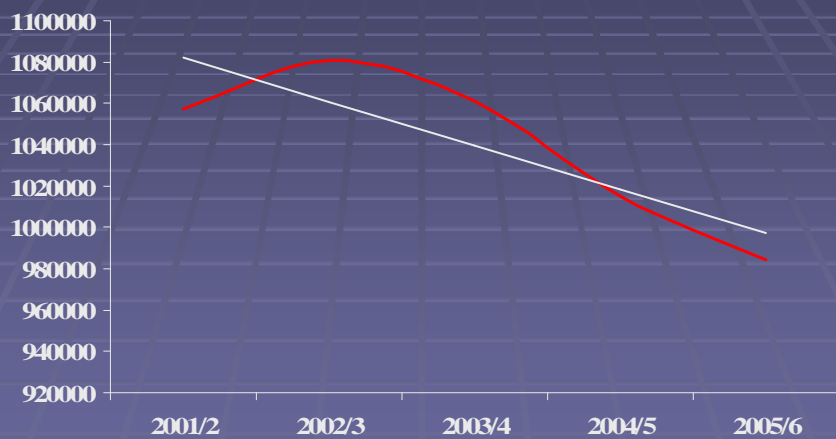
- Home Office
- Police Authorities
- 43 Constabularies
- “Tri-partite arrangement”
- Association of Chief Police Officers (ACPO)

## Police Reform

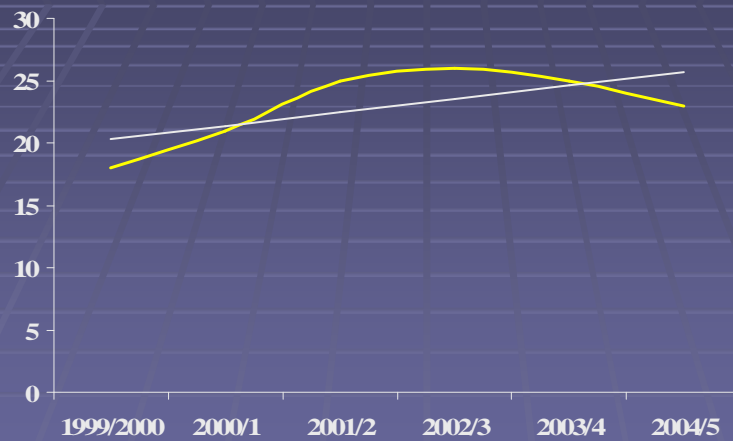
- Public Sector Reform (2001)
  - National standards/ Devolution / flexibility / choice
- Police Reform Act (2002)
  - Priority crime
  - Serious and organised crime
  - Tackling anti-social behaviour and disorder
  - Citizen-focused policing
- Building Communities, Beating Crime (2004)
  - Neighbourhood Policing
  - Communities to have a greater say in how their neighbourhood is policed



### Metropolitan Police: Total Notifiable Offences (2001 – 2006)

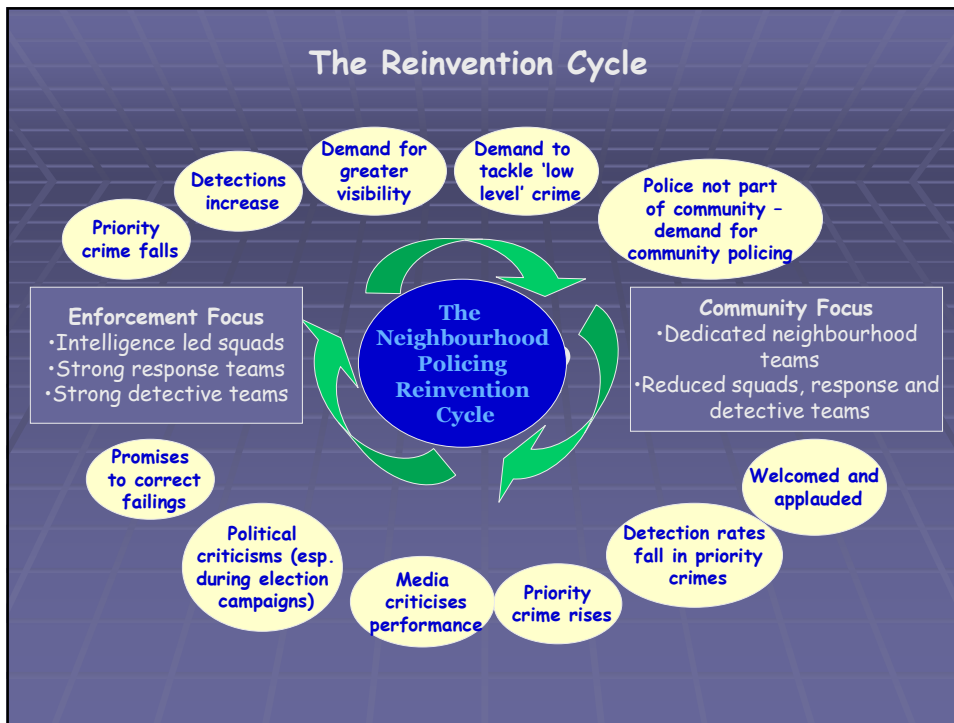


## MPS – Trends in Dissatisfaction with Policing (1999 -2005)

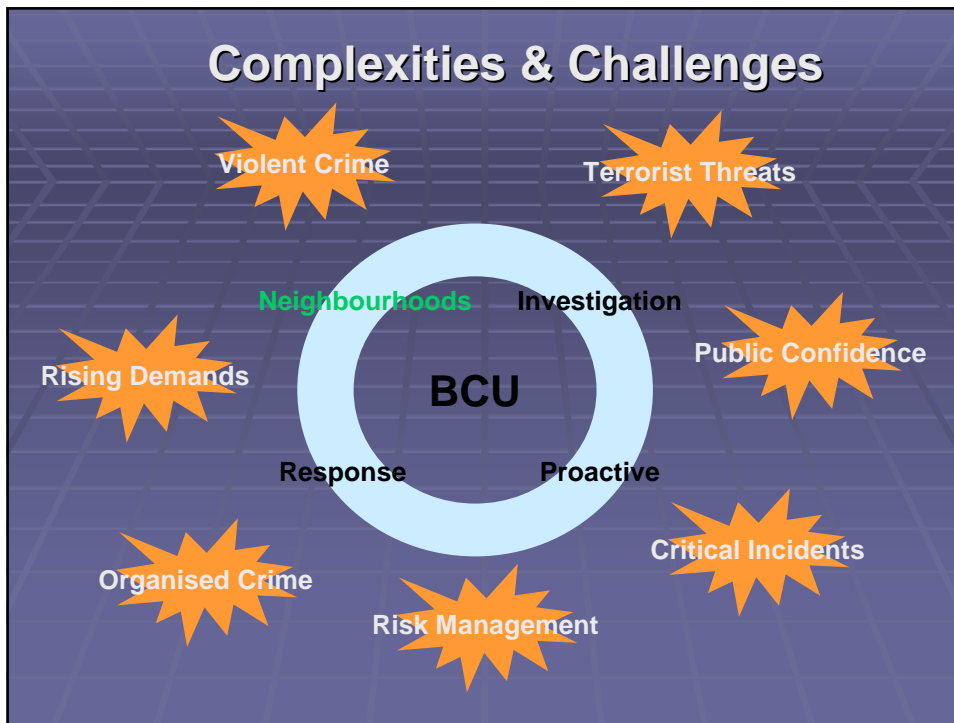


## The Reassurance Gap





# Community Policing in the UK



- ## Background to Neighbourhood Policing
- National Reassurance Policing Programme
  - Signal Crime
    - Types of crime & disorder that have a disproportionate impact upon perceptions of risk
  - Citizen Focus Agenda
    - Fairness and Equality
    - Neighbourhood Policing & Community Engagement
    - Customer Service and Accessibility

- The Purpose of Neighbourhood Policing is to deliver the right people, at the right places and in the right numbers to create neighbourhoods that are and that feel safe

## Requirements of neighbourhood policing

- Consistent presence of dedicated teams capable of working with the community to establish and maintain control – to be visible, accessible, skilled, knowledgeable and familiar to the community
- Intelligence-led identification of community concerns – prompt effective, targeted action against those concerns
- Joint action and problem solving with the community and other partners – to improve the local environment and quality of life within the community

## 10 Principles of Neighbourhood Policing

1. Organisational Strategy
2. Integrated Policing Activity
3. Evidence Based Deployment
4. Dedicated Teams
5. Locally Dependent



## 10 Principles of Neighbourhood Policing

6. Public Priorities
7. Collaborative Partnerships
8. Intelligence Led
9. Community Engagement
10. Performance Management

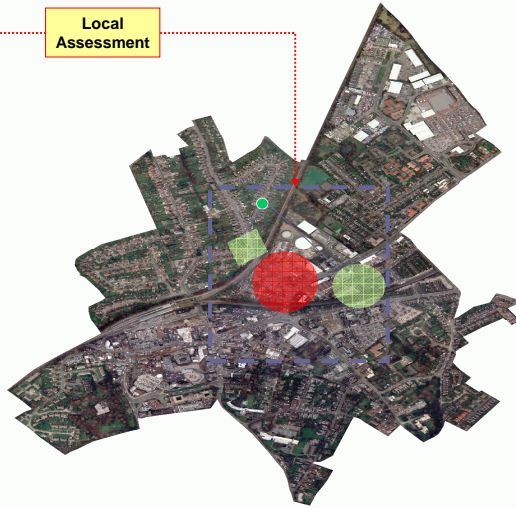




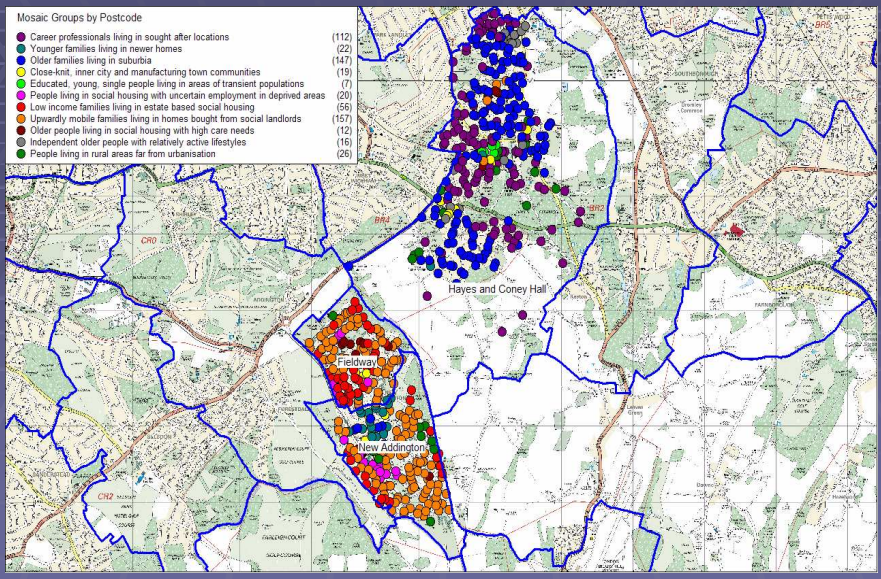
# 7 Stage Neighbourhood Policing Model

1 Research  
What do we know?

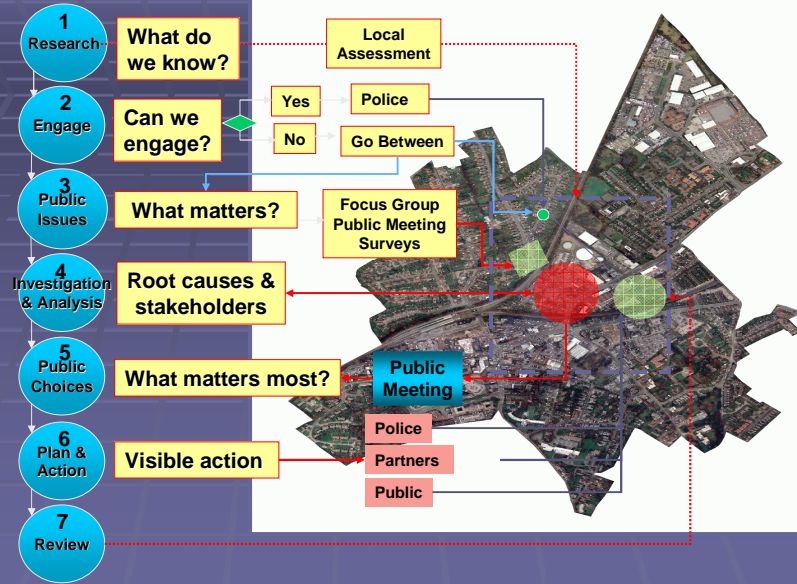
Local Assessment



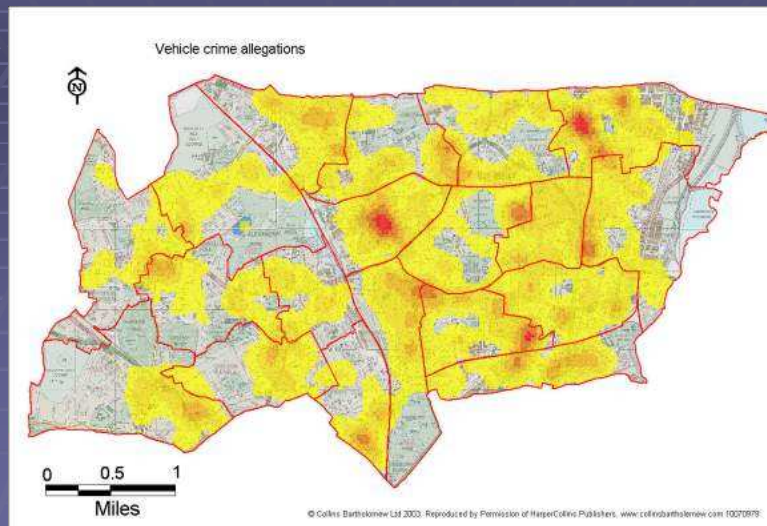
# Research Support



## 7 Stage Neighbourhood Policing Model



## Vehicle crime



## Public Perception Survey

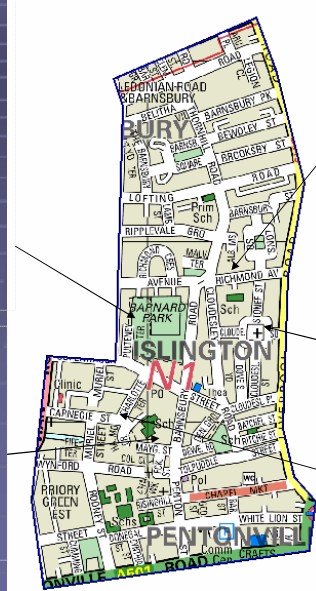
### Barnsbury Ward – Youth Disorder

#### Barnard Park (13 Responses)

- Youths throwing bottles at passers-by.
- Youths thought to be involved in petty crime and robberies.
- Underage Drinking
- Riding mopeds around the park and abandoning or setting fire to them.
- Causing noise and litter (including broken glass)

#### Barnsbury Estate (16 Responses)

- Youths congregating in stairwells where they eat takeaway food and smoke drugs and urinate in lifts as well as graffitiing walls
- Intimidating residents and causing harassment by ringing doorbells to blocks.
- Youths riding mopeds on Charlotte Terrace.
- Smashing phone box on Copenhagen St



#### Richmond Avenue (2 responses)

- Youths causing criminal damage to property.
- Youths letting off fireworks.

#### Cloudesley Square (2 Responses)

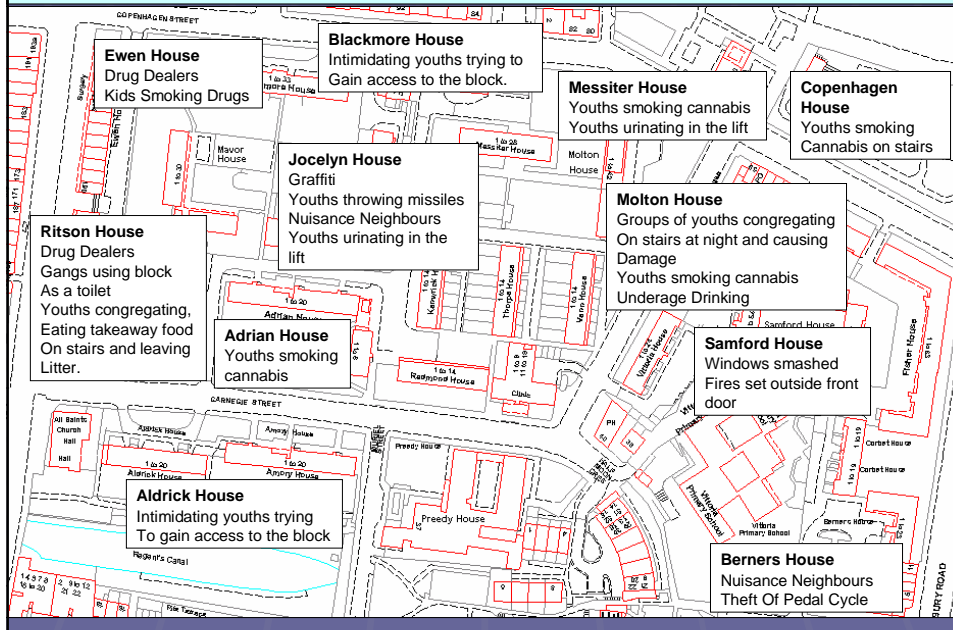
- Youths causing Criminal Damage to parked vehicles.

#### Carnegie Street (1 response)

- Gangs of youths congregating on Canal Path.

## Public Perception Survey

### Problem Areas – Barnsbury Estate



**Ewen House**  
Drug Dealers  
Kids Smoking Drugs

**Blackmore House**  
Intimidating youths trying to Gain access to the block.

**Messiter House**  
Youths smoking cannabis  
Youths urinating in the lift

**Copenhagen House**  
Youths smoking Cannabis on stairs

**Ritson House**  
Drug Dealers  
Gangs using block As a toilet  
Youths congregating, Eating takeaway food On stairs and leaving Litter.

**Jocelyn House**  
Graffiti  
Youths throwing missiles  
Nuisance Neighbours  
Youths urinating in the lift

**Molton House**  
Groups of youths congregating On stairs at night and causing Damage  
Youths smoking cannabis  
Underage Drinking

**Adrian House**  
Youths smoking cannabis

**Samford House**  
Windows smashed  
Fires set outside front door

**Aldrick House**  
Intimidating youths trying To gain access to the block

**Berners House**  
Nuisance Neighbours  
Theft Of Pedal Cycle

## Neighbourhood Policing in London – “Safer Neighbourhoods”

- 630 Neighbourhood Teams
- Use of dedicated teams comprising an effective mix of skills and powers
  - 1 x Sergeant (1<sup>st</sup> line supervisor)
  - 2 x Police Constables
  - 3 x Police Community Support Officers
- “Special Constables” (Shopwatch / campus watch)
- Analysts & researchers
- Safer Neighbourhood Insp

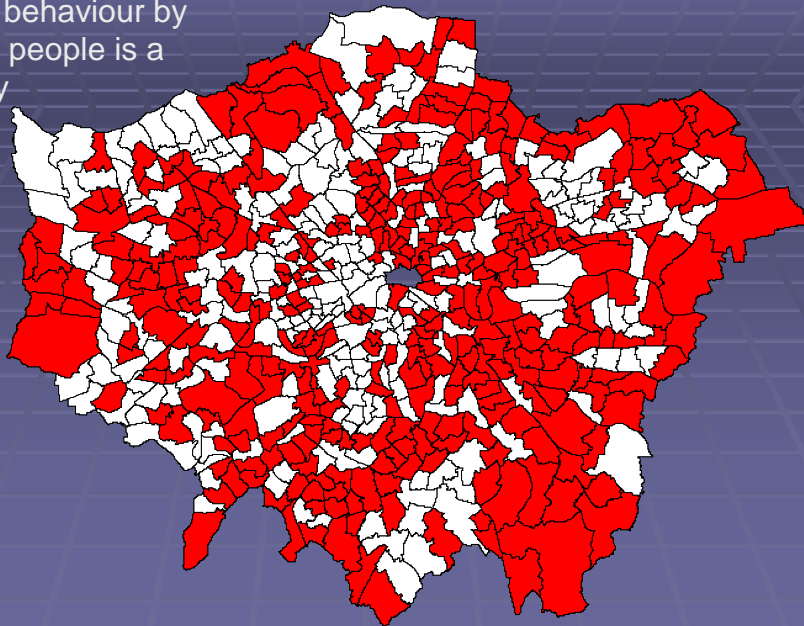
## Performance

- Outcomes
  - Fear of crime
  - Concern about anti-social behaviour
  - Satisfaction with local policing
  - Satisfaction that police have identified issues that are a priority for local people
  - Satisfaction that police re dealing with issues that are a priority for local people
- Key Individual Network surveys
- Neighbourhood outputs

## Implementation barriers

- Cultural barriers
- Complexity of “neighbourhoods”
- Mission creep
- New forms of leadership are required
- Performance management
- Strategic demands of local policing

Wards where Anti-social behaviour by young people is a priority





Thank You

Steve Bloomfield  
[stephen.bloomfield@met.police.uk](mailto:stephen.bloomfield@met.police.uk)